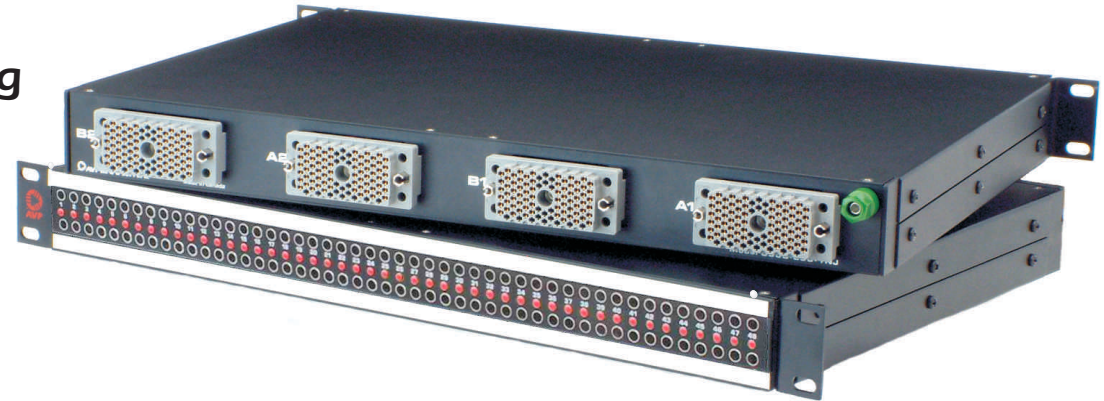
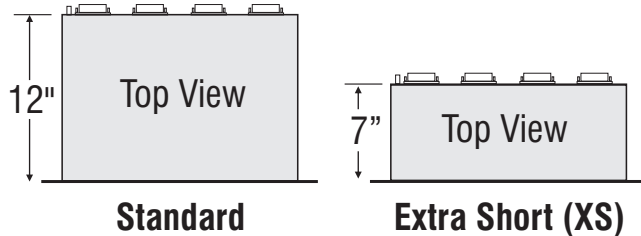


All AVP audio patchbays are suitable for AES/EBU digital & analog audio patching



Available Full Enclosure Depths



Full Enclosure Bantam Ordering Information



- Series**
- A Mosaic
 - T Mosaic (Black CIS)

- Jack Spacing**
- E Even Spaced

- Panel Height**
- 1 1 Rack Unit 1.75", 44mm
 - 15 1.5 Rack Unit 2.62", 66mm
 - 2 2 Rack Unit 3.50", 89mm

- Normaling**
- FN Full Normals installed at jacks
 - HN Half Normals installed at jacks
 - NN No Normals

- Options, add to end of Model Number**
- XS Jackfield Depth, Extra Short, 7.00", 177.8mm
 - BGHJ Bussed Grounds at jacks, horizontal
 - SGVJ Strapped Grounds at each vertical jack pair
 - KZ No Mating Connector Kit
 - KS Solder Mating Connector Kit

Designation Layouts... www.jackfields.com/support

Popular Models

Model	Description
AP-B248S1-L-FN-E90	1RU, 2x48 Bantam Jacks, Full Normals, EDAC 90 pin termination, Mating Connector Kit
AP-B248S1-L-HN-E90	1RU, 2x48 Bantam Jacks, Half Normals, EDAC 90 pin termination, Mating Connector Kit
MK248P-E90C	EDAC 90 pin Primaries Kit for 2x48 patchbay, Crimp
MK248P-E90S	EDAC 90 pin Primaries Kit for 2x48 patchbay, Solder

*38 & 56 Pin available upon request

Bantam (TT) Audio Dust Plugs



- DC-BBK10 ... Dust Plug, fits bantam audio jack, black, package of 10 plugs
 - DC-BBK100 ... Dust Plug, fits bantam audio jack, black, package of 100 plugs
- For jack inside diameter, 0.175" [4.45mm]

Bantam Audio Patchcords

For 110 Ohm AES/EBU Digital and Analog Audio Application



Patchcord Type

- B Bantam
- L Longframe



Patchcord Length

- 1 1' [300mm]
- 1.5 1.5' [450mm]
- 2 2' [600mm]
- 3 3' [900mm]
- 4 4' [1200mm]
- 6 6' [1800mm]
- 10 10' [3.05m]

- BLACK
- RED
- GREEN
- BLUE
- YELLOW
- PURPLE
- ORANGE
- WHITE

example... BPC-3-GREEN