



Series

- A** Mosaic
- T** Mosaic (Black CIS)

Number of Jacks per Row

- 24** 2x24 Jacks
- 26** 2x26 Jacks

Panel Height

- 1** 1 Rack Unit 1.75", 44mm
- 15** 1.5 Rack Unit 2.62", 66mm
- 2** 2 Rack Unit 3.50", 89mm

Normaling

- FN** Full Normals installed at jacks
- HN** Half Normals installed at jacks
- NN** No Normals

Options, add to end of Model Number

- XS** Jackfield Depth, Extra Short, 7.00", 177.8mm
- XL** Jackfield Depth, Extra Deep, 16.00", 406.4mm
- BGHJ** Bussed Grounds at jacks, horizontal
- SGVJ** Strapped Grounds at each vertical jack pair
- KZ** No Mating Connector Kit
- KS** Solder Mating Connector Kit

**Full Enclosure
Longframe
Ordering
Information**

Designation Layouts... page 29

Popular Models

Model	Description
AP-A224E1-L-FN-E90	1RU, 2x24 Longframe Jacks, Full Normals, EDAC 90 Pin Termination, Mating Connector Kit
AP-A224E1-L-HN-E90	1RU, 2x24 Longframe Jacks, Half Normals, EDAC 90 Pin Termination, Mating Connector Kit
MK224P-E90C	EDAC 90 pin Primaries Kit for 2x24 patchbay, Crimp
MK226P-E90C	EDAC 90 pin Primaries Kit for 2x26 patchbay, Crimp
MK224N-E90C	EDAC 90 pin Normals Kit for 2x24 patchbay, Crimp
MK226N-E90C	EDAC 90 pin Normals Kit for 2x26 patchbay, Crimp
MK224P-E90S	EDAC 90 pin Primaries Kit for 2x24 patchbay, Solder
MK226P-E90S	EDAC 90 pin Primaries Kit for 2x26 patchbay, Solder
MK224N-E90S	EDAC 90 pin Normals Kit for 2x24 patchbay, Solder
MK226N-E90S	EDAC 90 pin Normals Kit for 2x26 patchbay, Solder

Each Connectorized Jackfield is shipped complete with its crimp-pin Mating Connector Kit



EDAC Hand Crimp Tool
AVP Model **AT-EHCT**



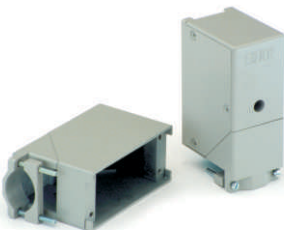
EDAC Insertion Tool
AVP Model **AT-EIT**



EDAC Ejection Tool
AVP Model **AT-EET**



90 Pin Metal Cover
(not included in Mating Connector Kit)
AVP Model **AP-MCE90**



**Mating
Connector Kit**

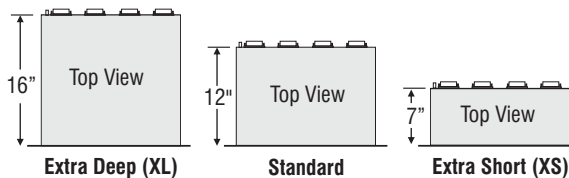
Tooling

patchcords
available on
page 54



Normaling Descriptions

All AVP audio jackfields are suitable for AES/EBU digital & analog audio patching



Available Full Enclosure Depths



Series

- A Mosaic (CIS)
- T Mosaic (Black CIS)

Jack Spacing

- S Stereo Spaced (most common)
- E Even Spaced

Panel Height

- 1 1 Rack Unit 1.75", 44mm
- 15 1.5 Rack Unit 2.62", 66mm
- 2 2 Rack Unit 3.50", 89mm

Normaling

- FN Full Normals installed at jacks
- HN Half Normals installed at jacks
- NN No Normals

Options, add to end of Model Number

- XS Jackfield Depth, Extra Short, 7.00", 177.8mm
- XL Jackfield Depth, Extra Deep, 16.00", 406.4mm
- BGHJ Bussed Grounds at jacks, horizontal
- SGVJ Strapped Grounds at each vertical jack pair
- KZ No Mating Connector Kit
- KS Solder Mating Connector Kit

Full Enclosure Bantam Ordering Information

Designation Layouts... page 35

Popular Models

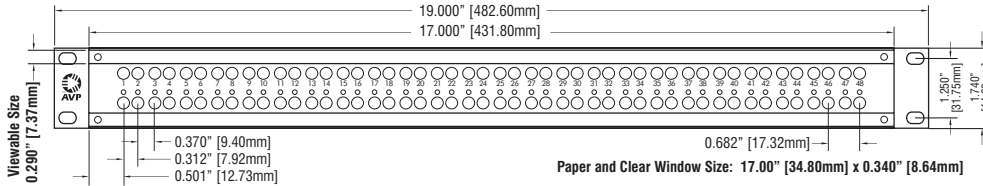
Model	Description
AP-B248S1-L-FN-E90	1RU, 2x48 Bantam Jacks, Full Normals, EDAC 90 pin termination, Mating Connector Kit
AP-B248S1-L-HN-E90	1RU, 2x48 Bantam Jacks, Half Normals, EDAC 90 pin termination, Mating Connector Kit
MK248P-E90C	EDAC 90 pin Primaries Kit for 2x48 patchbay, Crimp
MK248N-E90C	EDAC 90 pin Normals Kit for 2x48 patchbay, Crimp
MK248P-E90S	EDAC 90 pin Primaries Kit for 2x48 patchbay, Solder
MK248N-E90S	EDAC 90 pin Normals Kit for 2x48 patchbay, Solder

*38 & 56 Pin available upon request

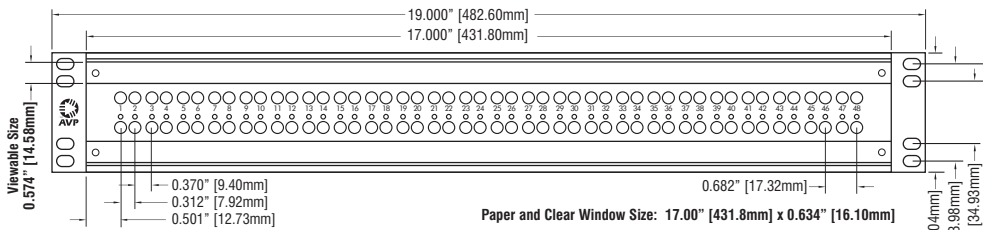
Length	Black	Red	Green	Blue	Yellow
2', 600mm	BPC-2-BLACK	BPC-2-RED	BPC-2-GREEN	BPC-2-BLUE	BPC-2-YELLOW
3', 900mm	BPC-3-BLACK	BPC-3-RED	BPC-3-GREEN	BPC-3-BLUE	BPC-3-YELLOW
4', 1200mm	BPC-4-BLACK	BPC-4-RED	BPC-4-GREEN	BPC-4-BLUE	BPC-4-YELLOW

110 Ohm AES/EBU Digital and Analog Audio Application ...more patchcords available on page 54

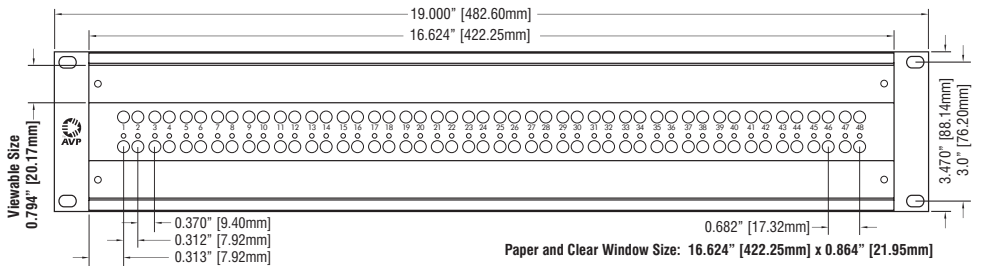
Bantam Designation Layouts



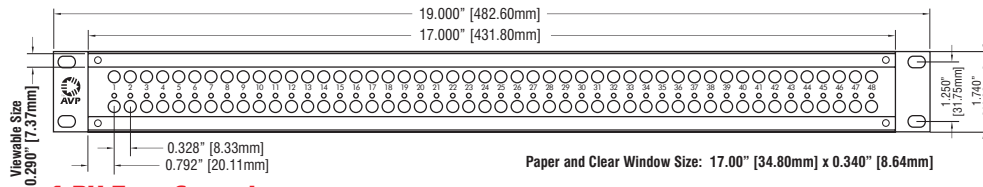
1 RU Stereo Spaced



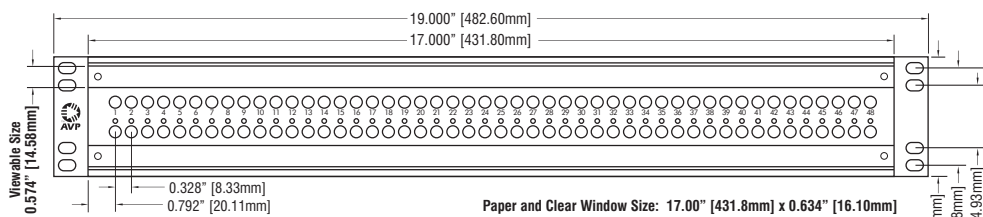
1.5 RU Stereo Spaced



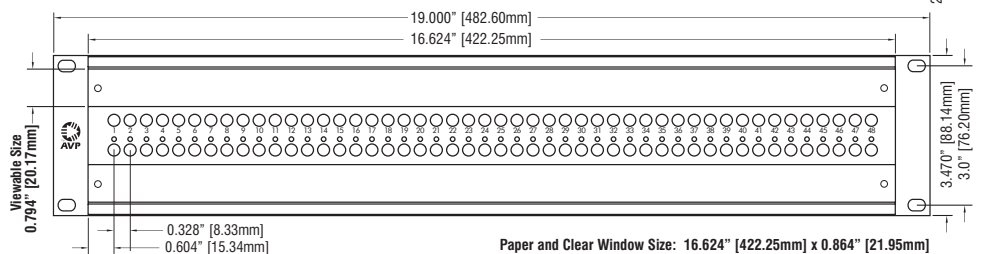
2 RU Stereo Spaced



1 RU Even Spaced



1.5 RU Even Spaced



2 RU Even Spaced