




Series

- A Mosaic 
- T Mosaic (no CIS)

Number of Jacks per Row

- 24 2x24 Jacks
- 26 2x26 Jacks

Panel Height

- 1 1 Rack Unit 1.75", 44mm
- 15 1.5 Rack Unit 2.62", 66mm
- 2 2 Rack Unit 3.50", 89mm

Normaling

- FN Full Normals installed at jacks
- HN Half Normals installed at jacks
- NN No Normals
- NT Normals out to one EDAC 120 pin connector
- HT Half Normals out to one EDAC 120 pin connector

Options, add to end of Model Number

- XS Jackfield Depth, Extra Short, 7.00", 177.8mm
- XL Jackfield Depth, Extra Deep, 16.00", 406.4mm
- BGHJ Bussed Grounds at jacks, horizontal
- SGVJ Strapped Grounds at each vertical jack pair
- KZ No Mating Connector Kit
- KS Solder Mating Connector Kit

**Full Enclosure
Longframe
Ordering
Information**

Designation Layouts... page32

Popular Models

Model	Description
AP-A224E1-L-FN-E90	2x24 Longframe Jacks, 1RU, Full Normals, EDAC 90 Pin Termination, Mating Connector Kit
AP-A224E1-L-HN-E90	2x24 Longframe Jacks, 1RU, Half Normals, EDAC 90 Pin Termination, Mating Connector Kit
AP-LPE120	120 Pin Normaling Connector with jumpers installed

Longframe Patchcords

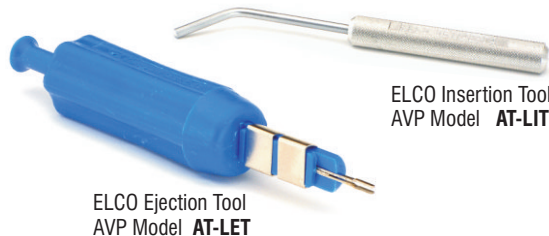
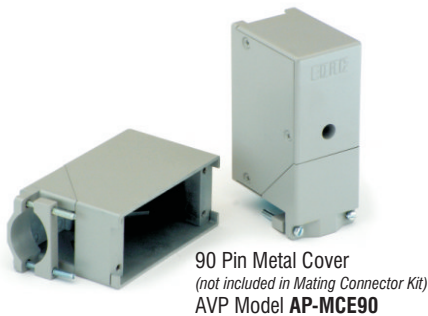
Length	Color	Model
2', 600mm	Black	LPC-2-BLACK
3', 900mm	Black	LPC-3-BLACK
4', 1200mm	Black	LPC-4-BLACK
	Red	LPC-2-RED
	Red	LPC-3-RED
	Red	LPC-4-RED
	Green	LPC-2-GREEN
	Green	LPC-3-GREEN
	Green	LPC-4-GREEN
	Blue	LPC-2-BLUE
	Blue	LPC-3-BLUE
	Blue	LPC-4-BLUE
	Yellow	LPC-2-YELLOW
	Yellow	LPC-3-YELLOW
	Yellow	LPC-4-YELLOW

110 Ohm AES/EBU Digital and Analog Audio Application ...more patchcords available on page 31

Each Connectorized Jackfield is shipped complete with its crimp-pin Mating Connector Kit



ELCO Hand Crimp Tool
AVP Model **AT-LHCT**



**Mating
Connector Kit**

Tooling